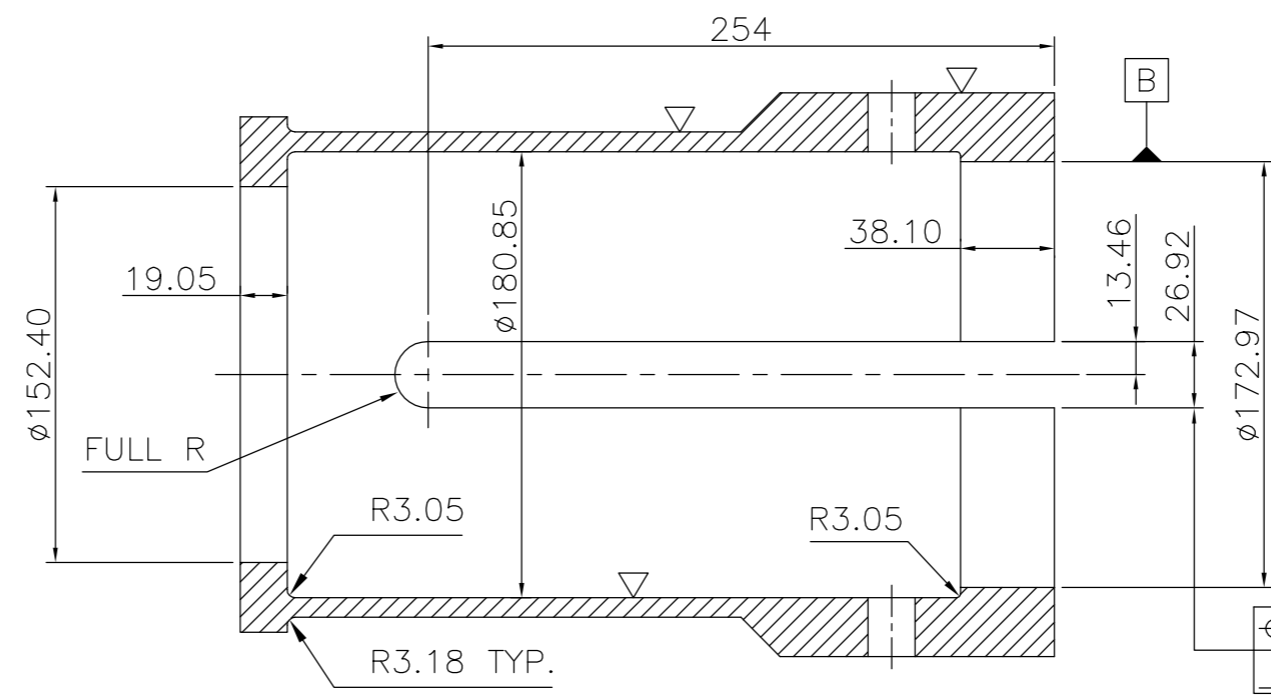


1 2 3 4 5 6 7 8

A ∇ (∇ , $\nabla\nabla$, $\nabla\nabla\nabla$)

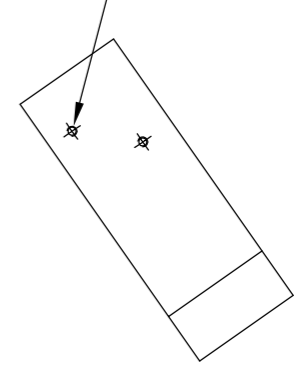
註：去除銳角毛邊

帶料加工含研磨
品項：套筒
材質：SUS304
數量：20



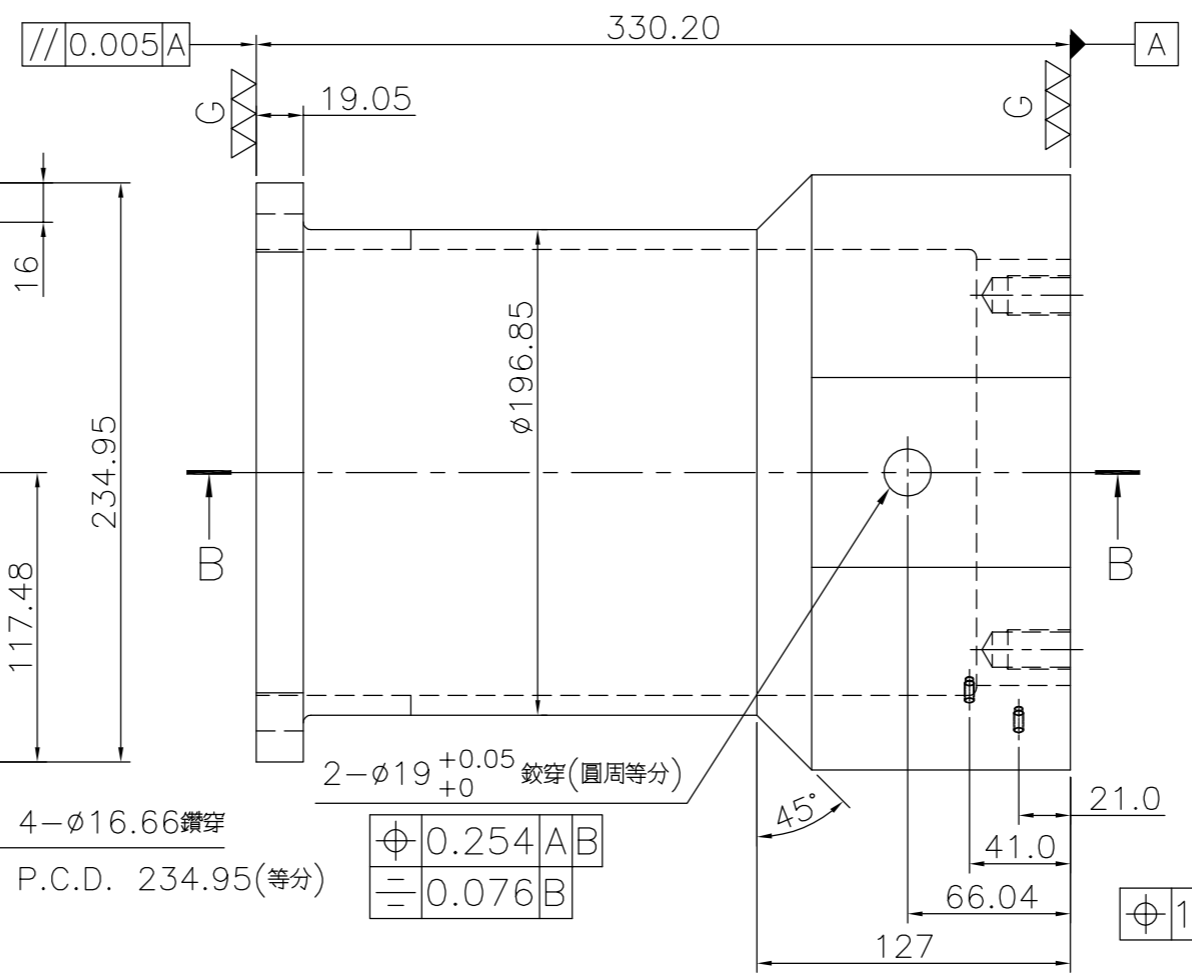
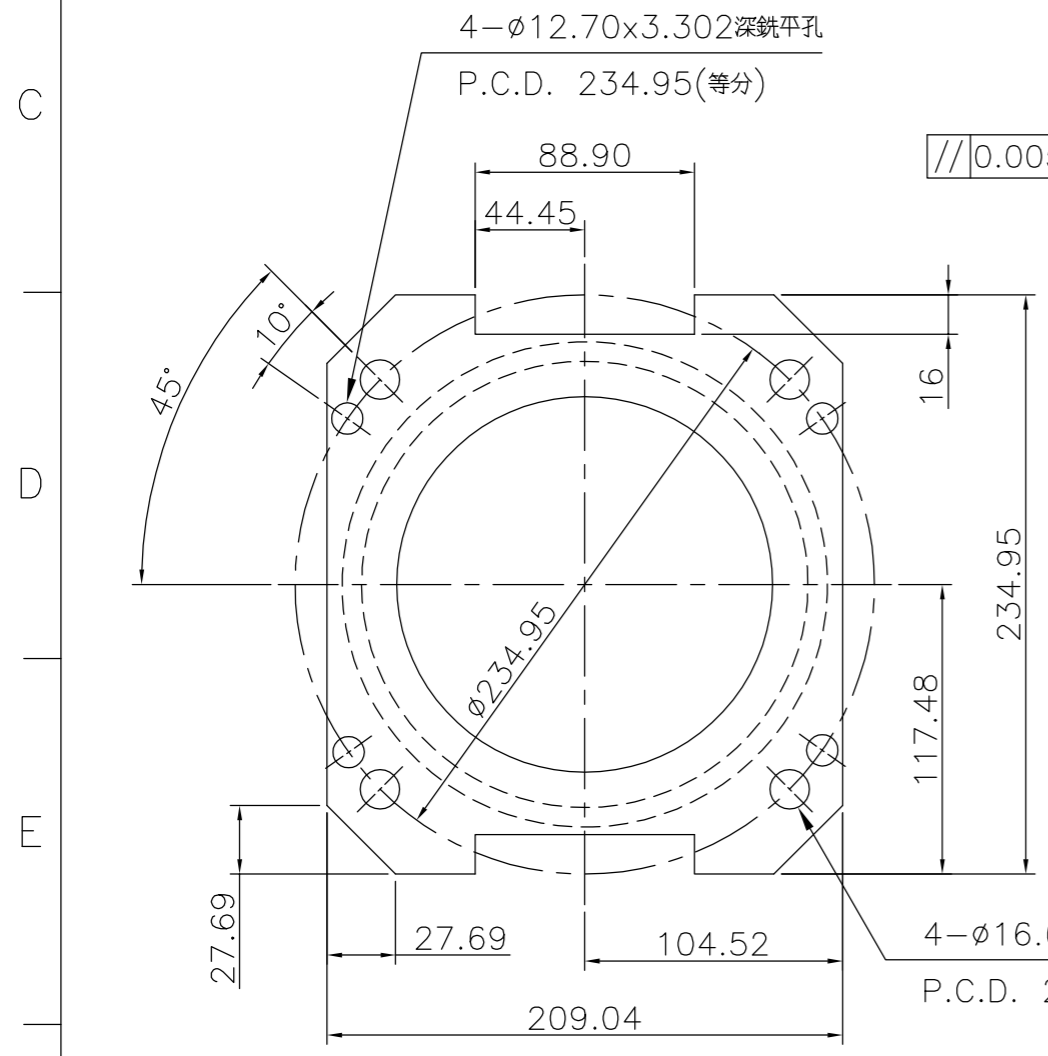
B-B剖視圖

2- ϕ 3.30x10.09深鑽孔
M4xP0.7x8.0深螺孔



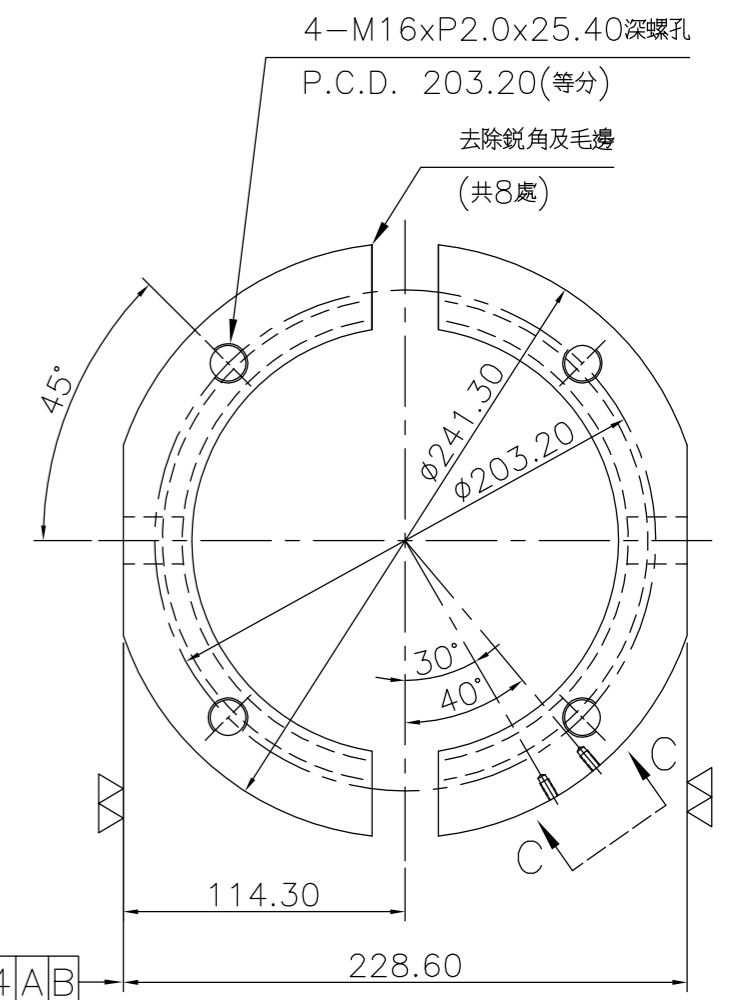
C-C輔助視圖

ϕ 0.254B
L0.254A



ϕ 0.254AB
\pm 0.076B

ϕ 1.524AB



孔與孔中心距公差 ± 0.15	加工一般公差 X.XXXX ± 0.0125		
鑽孔、沉頭孔公差 +0.25 -0.05 角度 $\pm 0.5^\circ$	X.XXX ± 0.125 X.XX ± 0.25 X.X ± 1.5		
表面粗糙度 ∇ $\nabla\nabla$ $\nabla\nabla\nabla$			

F

1 2 3 4 5 6 7 8